



CASE STUDY

Best Value 4000

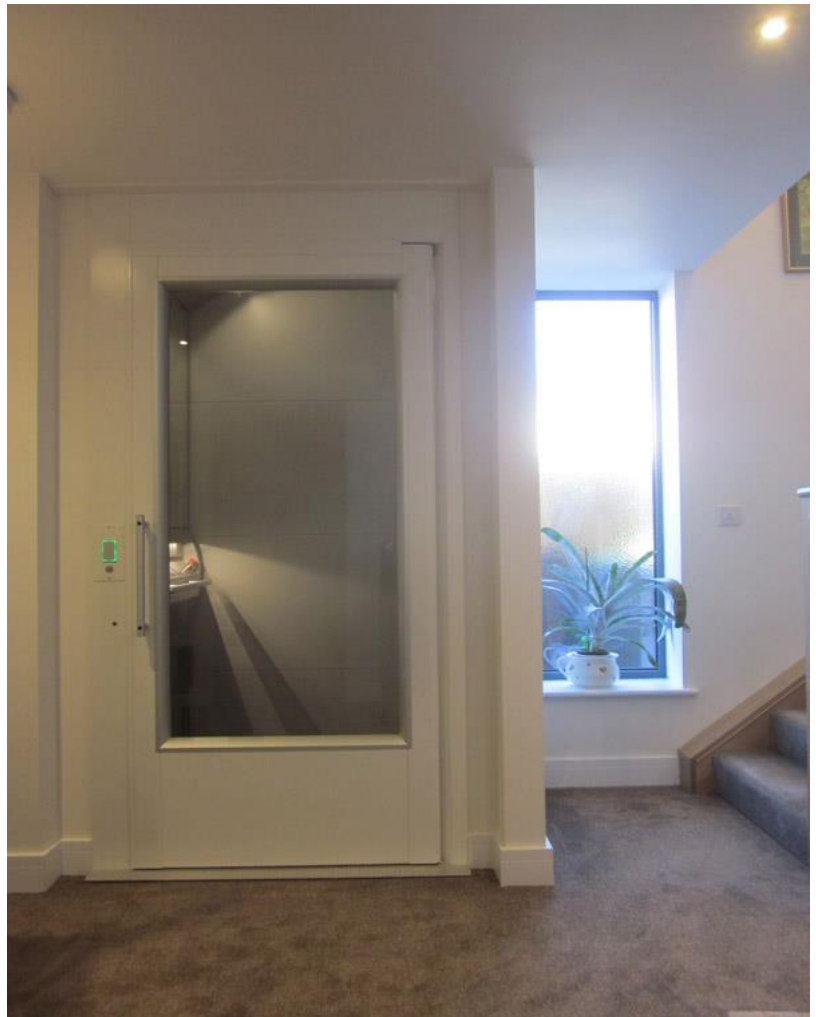
Client

Mr & Mrs Russell
LYME REGIS

Mr and Mrs Russell incorporated the installation of an Aritco 4000 Home Lift into the build process of their new home in Lyme Regis. The three-stop lift creates level access to the stunning three-floor house which is set into the rolling Dorset hills overlooking the famous bay. Positioning their home lift in a lobby at basement garage level cleverly creates an alternative to the otherwise steep steps up to the property's front door.

"It was our architect's idea to install a lift," commented Mr Russell. "My wife and I are very fit and healthy but we anticipate being in our new home for the next twenty years or more. We were persuaded that it would be a good idea to plan for the future as part of the initial build, rather than retrofitting a solution should we need it at a later date. The lift doesn't take up a large amount of space, it enables access to all three floors, and the cost was very reasonable in the grand scheme of our project, so it made perfect sense to take this advice."

Mr Russell's architect recommended Evolifts but he and his builder did independent research, speaking to four manufacturers before making their selection. "I was keen to choose something that was mechanically simple to run and maintain and the Aritco 4000 fitted the bill – and the budget - perfectly. I'm very pleased with our home lift and the team at Evolifts were very helpful throughout. Although we don't expect to use it ourselves much initially, it will be immensely helpful when elderly relatives visit – and I know the grandchildren will love it too!"



Testimonial

"I'm very pleased with our home lift and the team at Evolifts were very helpful throughout."
Mr Russell, Lyme Regis

EVOLifts Limited.
International House, Southampton International Business Park
George Curl Way, Southampton SO18 2RZ.

t. 020 3195 3958 e. sales@evohomelifts.co.uk

www.evohomelifts.co.uk